

15 Information Technology



What is the Service?

Municipal Information Technology (IT) divisions plan, build and sustain the technology and information environments that support municipal service delivery.

Business, IT leaders and staff collaborate to develop portfolios of initiatives in alignment with the overall strategic goals of their organization; and meeting the service delivery objectives of each line of business. The IT service portfolio lists and describes the IT organization's services with their explicit value proposition to the consumers.

Specific objectives include:

- Providing reliable, secure service to residents, businesses and municipal staff across multiple channels including counter, call-centre and the wired and mobile internet
- Developing and supporting information and technology infrastructure
- Establishing best practices to monitor the efficacy of service delivery results and make solutions flexible enough to meet future demands

Influencing Factors:

Devices: Device numbers and types could be influenced by the types of services provided and or organizational culture.

IT Services: Type of IT services provided may vary from one municipality to another, i.e. does IT include GIS, Telecommunications, etc.

Organizational Form: Extent to which IT services are centralized or decentralized can influence reported results, i.e. services may also be contracted out, directly impacting FTE levels.

Municipal Topology: Physical territory covered within the municipal boundaries and associated resident density can influence technology delivery mechanisms and associated costs.

Additional Information:

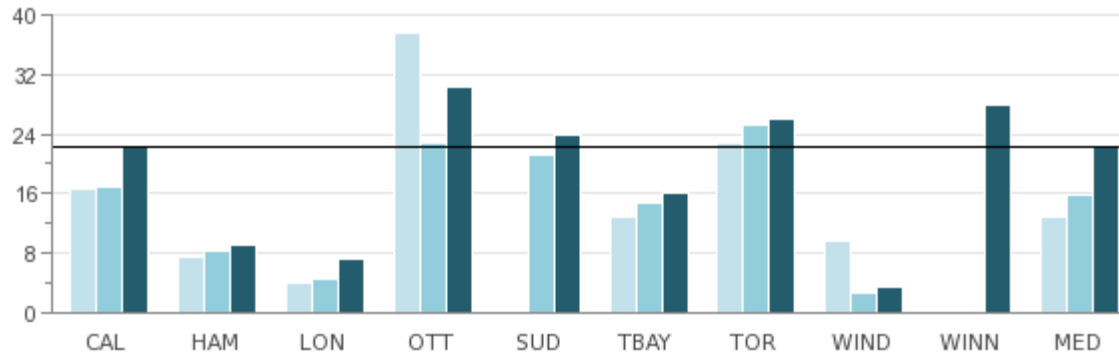
Cost measure results may vary from previous years and between municipalities as not all municipalities are able to obtain the full costs of decentralized IT goods and services. Decentralized goods and services refer to IT costs that are outside of the IT department's budget.

Information Technology

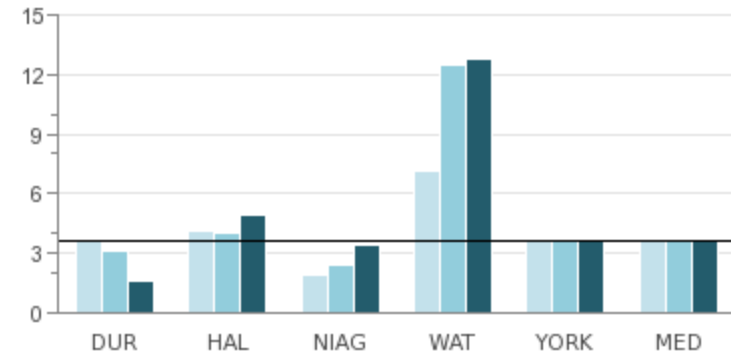
How often is the main municipal website visited?

Fig 15.1 Number of Visits to Municipal Website per Capita

Single-Tier



Upper-Tier



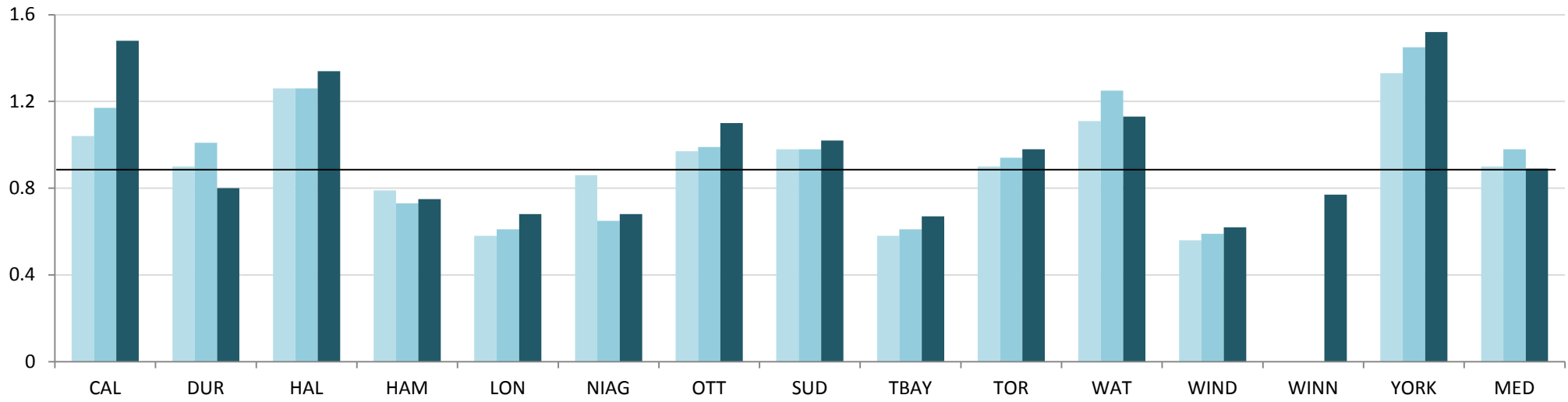
2011	16.7	7.6	4.0	37.6		12.9	22.7	9.6		12.9	3.6	4.1	1.9	7.1	3.6	3.6
2012	17.0	8.2	4.6	22.8	21.2	14.8	25.1	2.7		15.9	3.1	4.0	2.4	12.5	3.6	3.6
2013	22.3	9.0	7.2	30.2	23.8	16.0	25.9	3.6	27.9	22.3	1.6	4.9	3.4	12.8	3.6	3.6

Source: INTN105 (Community Impact)

Note: This measure reflects visits to the main municipal website only, e.g. www.ottawa.ca, www.hamilton.ca, etc.

What is the average number of technology devices in use?

Fig 15.2 Number of Information Technology Devices per Total Municipal FTE



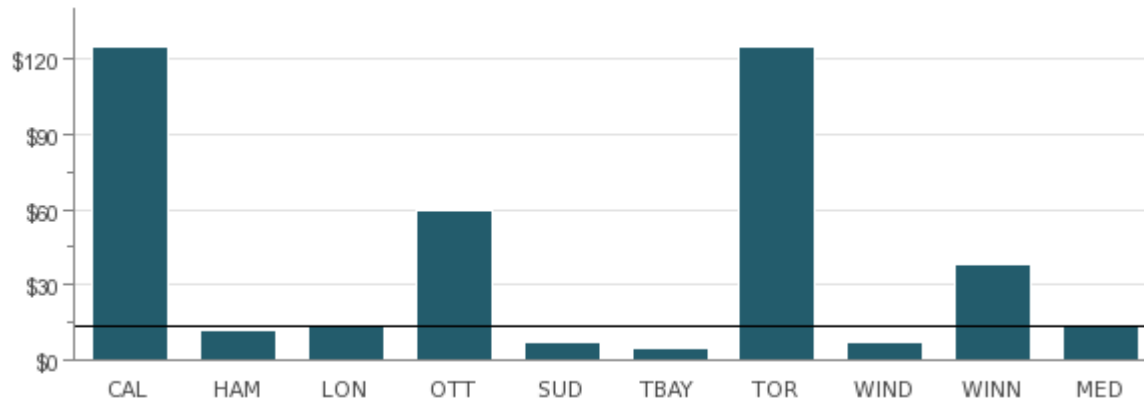
	CAL	DUR	HAL	HAM	LON	NIAG	OTT	SUD	TBAY	TOR	WAT	WIND	WINN	YORK	MED
2011	1.04	0.90	1.26	0.79	0.58	0.86	0.97	0.98	0.58	0.90	1.11	0.56		1.33	0.90
2012	1.17	1.01	1.26	0.73	0.61	0.65	0.99	0.98	0.61	0.94	1.25	0.59		1.45	0.98
2013	1.48	0.80	1.34	0.75	0.68	0.68	1.10	1.02	0.67	0.98	1.13	0.62	0.77	1.52	0.89

Source: INTN205 (Service Level)

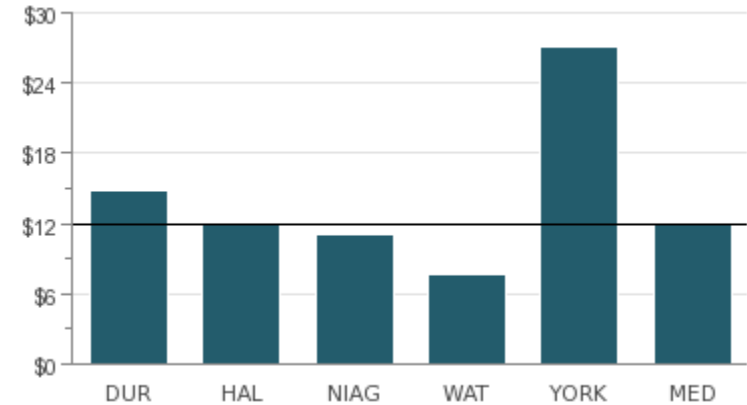
What is the total cost for Information Technology Services?

Fig 15.3 Total Information Technology Costs (includes amortization)

Single-Tier (In Thousands)



Upper-Tier (In Thousands)



2013	\$125,165	\$11,905	\$13,558	\$59,623	\$7,097	\$4,589	\$125,098	\$6,728	\$37,724	\$13,558		\$14,796	\$11,952	\$11,107	\$7,724	\$27,120	\$11,952
------	-----------	----------	----------	----------	---------	---------	-----------	---------	----------	----------	--	----------	----------	----------	---------	----------	----------

Source: INTN245 (Statistic)

Note: The measure includes operating cost for IT plus amortization; and excludes annual capital investment related to IT assets.